



Flat

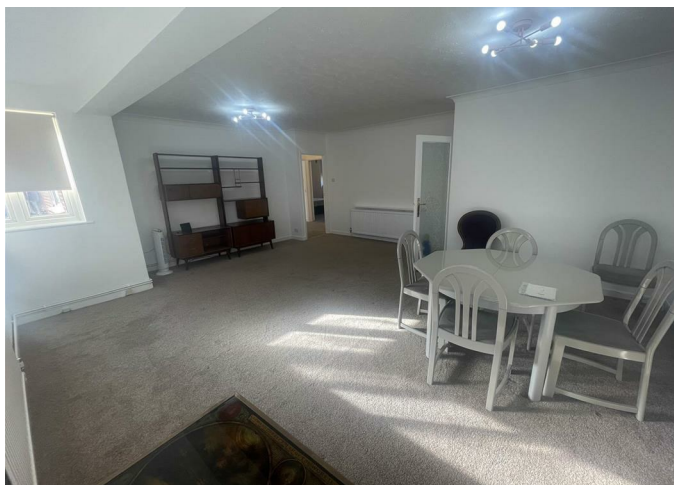
# NEWLY DECORATED SPACIOUS 3 BEDROOM GROUND FLOOR

PCM

## £2,150

### FEATURES

- 3 DOUBLE BEDROOMS
- LARGE LIVING ROOM
- EAT-IN KITCHEN
- CLOSE TO LOCAL SCHOOLS
- GROUND FLOOR
- SEPARATE W.C
- WALKING DISTANCE TO BOTH EDGWARE AND STANMORE
- PART FURNISHED



**SPACE**  
RESIDENTIAL

# 3 Bedroom Flat located in Edgware

Space Residential are pleased to present this very spacious three-bedroom ground floor apartment, ideally located in a quiet residential setting with well-maintained communal gardens.

The property offers a large living room, an eat-in kitchen with an additional utility room, a modern bathroom with both a bath and separate shower cubicle, and the added convenience of a separate WC.

Accommodation comprises two double bedrooms and one smaller double bedroom, making it ideal for families or sharers.

The apartment is situated within walking distance of both Edgware and Stanmore town centres, providing excellent transport links via the Northern and Jubilee lines, and is also close to local schools.

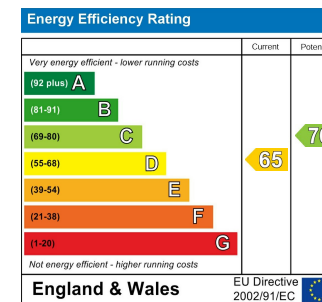
Call us on

**0208 906 2222**

**info@spaceresidential.com**  
**spaceresidential.com**

**Council Tax Band**

**E**



Agents Note: Whilst every care has been taken to prepare these particulars, they are for guidance purposes only. All measurements are approximate and are for general guidance purposes only and whilst every care has been taken to ensure their accuracy, they should not be relied upon and potential buyers are advised to recheck the measurements.

**SPACE**  
RESIDENTIAL